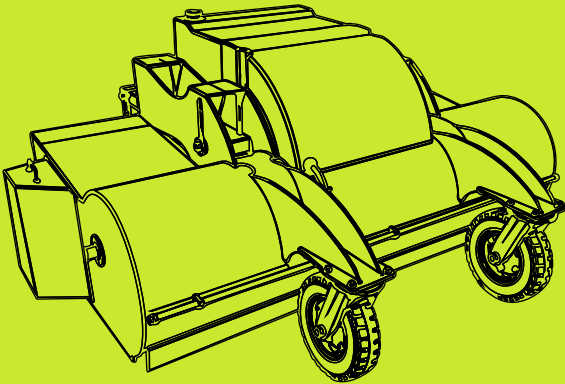


RS220 Sweeper

Manual 2026



Contents

Important Information	3
Product Identification	4
Safety Instructions	5
Installation & Removal	6
Operating Instructions	7
Transporting Loads	8
Maintenance	9
Parts Diagram	10
Parts List	11
Warranty	12
UKCA Declaration of Conformity	13
CE Declaration of Conformity	14

X-Form Engineering Limited

Church Road, Griston, Norfolk, IP25 6QA, England

sales@xformeng.com

Important Information

This manual details the relevant use, safety instructions, and maintenance procedures for the Sweeper Collector. This document is not a training manual. Operators will need to be trained in the necessary skills to use the attachments before trying to work with it, or they risk being a danger to themselves and the people around them.

Important

Do not attempt to install, operate, or maintain any attachment until you have read and understood all the relevant operator documentation for both the attachment and the carrier machine. Pay strict attention to all relevant safety information. You must observe all relevant laws and regulations.

Intended Use

The Sweeper Collector is designed for sweeping, collecting and dumping various materials. This attachment must only be used for this purpose. The sweeper is not designed to be used in areas which contain twine or wire. Wrapping of twine or wire around the bearing or motor can shorten its life. Make sure to clear the area of twine / wire before using the sweeper.

Carrier Machine Suitability

Always check the load capacity of the carrier machine is sufficient to use with the attachment. Make sure the carrier machine has the correct fork tines and the auxiliary hydraulic hoses are of a suitable length. To operate this attachment, the carrier machine must be installed with an auxiliary hydraulic circuit.

Servicing

Only routine maintenance, as detailed in this manual, should be carried out by the user. It is recommended that major servicing be carried out by your respective dealer. When servicing, making adjustments, or cleaning, ensure that the appropriate personal protective equipment is worn. Always switch off the carrier machine and remove the key before servicing.

Product Identification

The Sweeper Collector has an identification plate located on front of the attachment. Use the 'Part Number' when identifying replacement parts.

		X-Form Engineering Griston IP25 6QA UK info@xformeng.com			
Part Number		Weight			
Model		Max Flow Max Pressure			
Pick-up Type		Rated Capacity			
Serial Number		Year of Manufacture			

IMPORTANT Visit www.xformeng.com and read manual before use XF-IDHSv1

ID Plate Item	Description
Part Number	Attachment part number
Model	Attachment model
Pick-up Type	Pick-up/bracket hitch type
Serial Number	Unique serial number
Weight	Attachment weight, without tines, shown in kilograms
Max Flow	Maximum hydraulic flow rate shown in litres per minute
Max Pressure	Maximum hydraulic pressure shown in bar
Rated Capacity	Rated capacity shown in cubic meters
Year of Manufacture	Year the attachment was manufactured

Safety Instructions



Warning

To operate the machine with the attachment safely, you must have the appropriate training and be authorised to use them. It is essential that operators observe all safety instructions as incorrect use can endanger life. You must abide by all relevant laws, including health and safety regulations that apply to the country you are operating in.

General Safety

In this manual, and on the attachment and machine, you will find warning messages. Read and understand them. They tell you of potential hazards and how to avoid them.

- Do not work with the attachment and machine until you are sure that you can control it and are sure that you and others around you will be safe.
- If you are unsure of anything about the attachments, machine, or the job, ask someone who knows. Do not assume anything.

Safety Labels

- Safety labels on the attachment and machine warn you of possible hazards. You can be injured if you do not obey the safety instructions shown.
- If you require eyeglasses for reading, make sure they are worn when reading safety labels. Do not over-stretch or place yourself in a dangerous position to read the safety labels.
- Keep all safety labels clean and readable. Replace lost or damaged safety labels.

Risk Assessment

- It is essential that a risk assessment of the work to be performed is completed and that the operator complies with all safety precautions that the assessment identifies. Do not put your life or others at risk.
- **DANGER!** It is the responsibility of the operator to assess factors affecting machine stability, including size and type load, angle of elevation, the distance the boom is extended, ground condition (remember that wet ground will not support the same loads as when dry), wind speed and direction before operating the machine.
- If you are unsure of the suitability of the attachment or machine for a specific task, contact your attachment/machine manufacturer or distributor, who will be able to advise you.

Installation & Removal

Warning

Keep other people clear of the area while you engage the attachment. If a second person is to be involved in this procedure, ensure that they keep clear of the machine and attachment until signalled by the operator to proceed.

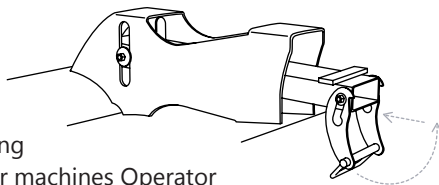
Important

Before installation of the attachment, make sure it is within the carrier machines lifting capability (refer to carrier machine Operator Manual). The machine loading limits at different boom positions will be shown on the load charts located in the cab of the machine and/or in the carrier machine Operator Manual.

Installation of the Attachment

Never attempt to move the attachment manually. The sweeper is designed to for use with carriage mounted fork tines with a profile up to 125 x 50mm.

- Fully place the fork tines into the sleeves and lift both heel locks in place (see diagram).
- Release the hydraulic pressure from the system prior to coupling/decoupling the hydraulic hoses (refer to the carrier machines Operator Manual procedure for connecting and disconnecting to the machines auxiliary hydraulic system). Make sure that the hydraulic hoses are coupled correctly.



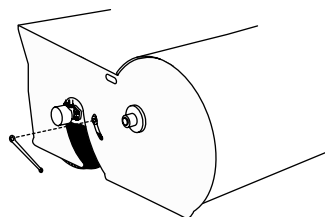
Removal of the Attachment

- Removal is the opposite to installation.

Adjusting Bristle Height

As bristles wear it will be necessary to adjust the bristle height.

- Place the sweeper on firm level ground.
- Using the spanner in the motor cover, loosen the height adjustment bolts on both sides of the sweeper (see diagram).
- Ensure bristles only lightly touch the ground and are not crowded over.
- Tighten both the height adjustment bolts.



Operating Instructions



Warning

Make sure that you have had adequate training and that you are confident in your ability to operate the attachment safely before you operate it.

Important Safety Instructions

- Before using the attachment, ensure regular maintenance has been carried out and it is in good working order.
- Ensure the area is clear of personnel and other equipment before and during the operation of the attachment. If anyone enters the operating area, stop work and turn off the carrier machine.
- Ensure the attachment does not restrict forward vision or important sight-lines.
- Avoid electric power cables. You could be electrocuted or badly burned if you get the machine or its attachments too close to electrical power cables.
- When leaving the carrier machine, lower the attachment to the ground and turn off the engine.
- Make sure the attachments and any collected material do not exceed the rated lifting capacity of the carrier machine.

Operation of the Attachment

CAUTION! When sweeping do not exceed 5 mph or use high engine revs, as this will damage the sweeper and hydraulic motor. Avoid potholes, raised drain covers and sweeping over bands, twine, wire, ropes, or similar material.

For maximum efficiency and longest brush life, check the main brush height before each operation. Operate the sweeper only on flat level surfaces. Do not allow the sweepers collector bucket to scrape along the ground whilst sweeping.

- Raise the sweeper until you can see the collector bucket underneath and use the hydraulic auxiliary controls to test the operational direction. One way will open the collector, the other will close the collector then start the sweeper.
- Ensure the collector is closed and carefully lower the sweeper to the ground.
- Set the tine sleeves so they are level and centred in line with the tine height arrows. This will allow the sweeper to float and help prevent damage.
- After emptying the collector, ensure it is closed before lowering to the ground.
- Optional - Fill the water tank to supply the water sprinkler dust suppression system. Water should be drained from the tank if frost is expected.

Transporting Loads



Warning

The safe transit of the load is the responsibility of the machine operator and transport contractor. Any load that may move during transit must be adequately secured.

Transporting Loads with the Attachment

Before transporting the attachment, make sure you obey the local rules and laws where the load will be carried through.

- Slowly raise the load to the minimum height required to safely cross the terrain, ensuring the load weight is within the capacity of the carrier machine.
- Operate the machine whilst ensuring the load always remain level.
- Accelerate, turn and brake gradually.
- Avoid any obstacles, bumps or holes on your intended path.
- Frequently check load to ensure the load has not become unstable.

Preparing the Attachment for Travel

It is your responsibility to comply with all the relevant local laws and regulations before taking the machine and attachment on the road or on site.

Maintenance

Warning

The hydraulic system is under high pressure. Hydraulic oil forced out under pressure can break the skin and cause severe injury. Before working on the hydraulics, release the pressure from the system and turn the machine engine off.

Daily Checks

- Check attachment hydraulic hoses for faults. Some examples of faults include but are not limited to; end fitting damaged or leaking, outer covering chafed or cut and wire reinforcing exposed. Replace if necessary with high pressure hoses (ensure you have a competent knowledge and training of hydraulic maintenance before attempting to change or repair a hose).
- Check the hydraulic fittings/hoses for tightness.
- Check all bolts and pins for damage, breaks or wear. Replace if necessary.
- Check bristles for excessive wear and replace if necessary.
- Keep all safety labels clean and legible. Replace if damaged or worn.

Replacing Bristles

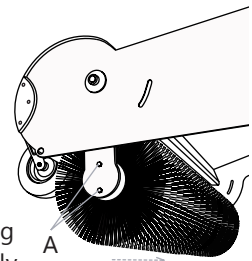
Open the collector and place the sweeper on the ground.

Remove the height adjustment bolts from both sides.

Slowly raise the sweeper until the bristle cartridge has swung down. Remove the bolts marked 'A' and swing the bristle cartridge out. Remove the bearing and collar.

Slide off the retaining plate, bristle segments and spacers.

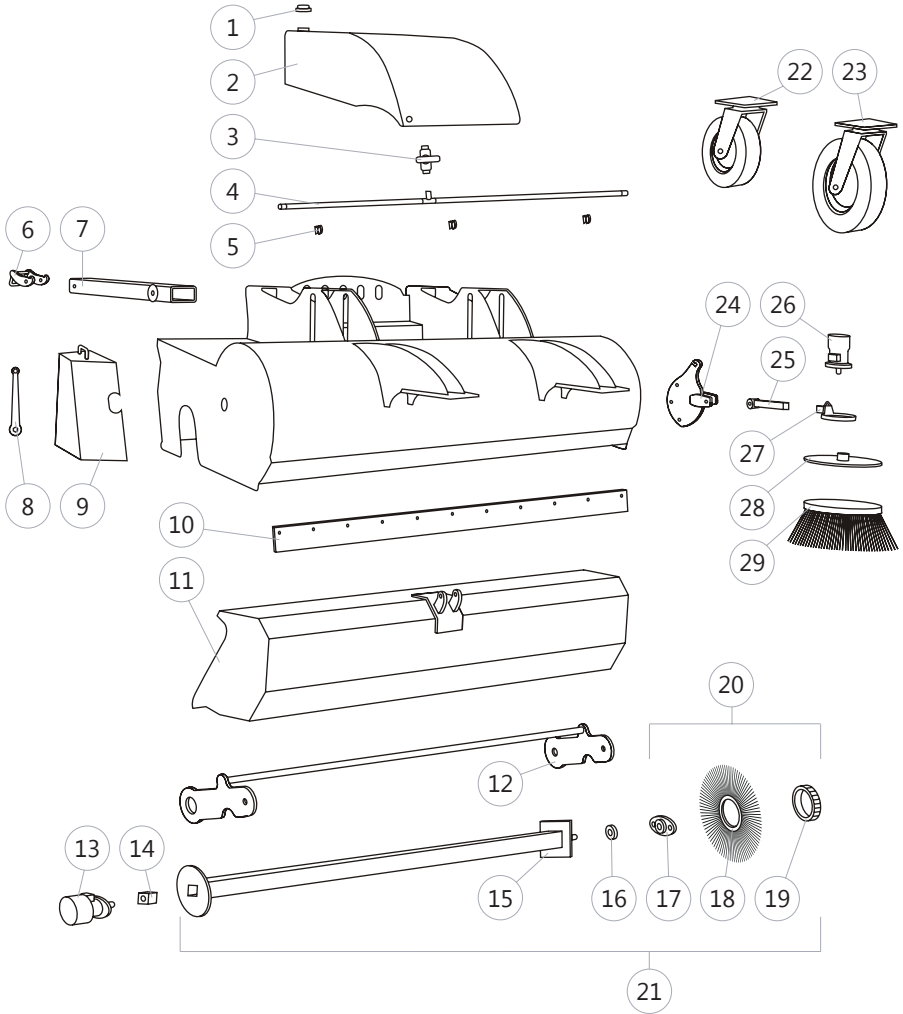
Starting with a bristle, reload the bristle cartridge, alternating bristle segments and plastic spacers, ensuring they are tightly packed. Replace the bristle retaining plate, collar and bearing. Locate the bristle cartridge onto the hydraulic motor block and swing back into place. Replace the bolts marked 'A'. Lower the sweeper whilst slowly going forward. Finally, set the bristle height and replace the height adjustment bolts on both sides of the sweeper.



Storage

- Clean thoroughly, removing all mud and dirt.
- Inspect for visible signs of wear, breakage, or damage. Order any parts required and make the necessary repairs to avoid further wear or damage.
- Tighten loose nuts and hydraulic connections. Cap hydraulic couplers.
- Store in a dry and protected place.

Parts Diagram



Model Shown RS220-K

RS Parts List

Item	Part No.	Description
1	RS_WTC	RS Water Tank Cap
2	RS_WT	RS Water Tank
3	RS_WST	RS Water Sprinkler Tap
4	RS_WSB	RS Water Sprinkler Bar (Includes Part 5)
5	RS_WSBC	RS Water Sprinkler Bar Clip
6	RS_TL	RS Tine Lock (Includes Nut & Bolt Set)
7	RS_TP	RS Tine Pocket
8	RS_BAS	RS Bristle Adjustment Spanner
9	RS_HMC	RS Hydraulic Motor Cover
10	RS_RG	RS Rubber Guard
11	RS_CB	RS Collector Bucket
12	RS_BSA	RS Bristle Swinging Arm
13	RS_HM	RS Hydraulic Motor (Includes Valve Block & Part 14)
14	RS_HMDB	RS Hydraulic Motor Drive Block (Includes Bolt Set)
15	RS_BC	RS Bristle Cartridge
16	RS_C	RS Collar
17	RS_B	RS Bearing
18	RS_BS	RS Bristle Segment
19	RS_PS	RS Plastic Spacer
20	RS_RBS	RS Replacement Bristle Set (Includes Parts 16, 17 & 18)
21	RS_BCC	RS Bristle Cartridge Complete (Includes Parts 15 to 19)
22	RS_RC	RS Rear Castor
23	RS_FC	RS Front Castor
24	RS_KBSM	RS Kerb Brush Sweeper Mount
25	RS_KBA	RS Kerb Brush Arm
26	RS_KBHM	RS Kerb Brush Hydraulic Motor
27	RS_KBMH	RS Kerb Brush Motor Holder
28	RS_KBMP	RS Kerb Brush Mounting Plate
29	RS_KB	RS Kerb Brush

Warranty

Our products are warranted for a period of 12 months from the date of delivery. The warranty does not apply to wear parts. Any work carried out on our products while under warranty must be done with written agreement from X-Form Engineering. At our discretion, we may require that the product be returned to us for rectification work and apply transport charges.

X-Form Engineering shall not be liable in any circumstances for any loss, injury, or expense, whether direct or indirect, which may arise for any reason whatsoever in connection with any goods supplied or work done.

X-Form Engineering Limited

Church Road, Griston, Norfolk, IP25 6QA, England

sales@xformeng.com



Declaration of Conformity

In accordance with UK Government guidance

Document Ref: XF_UKCA_RS_2026

Product: Sweeper Collector

Model(s): RS Range

Manufacturer: X-Form Engineering Limited
Church Road, Griston, Norfolk, IP25 6QA, England

This declaration is issued under the sole responsibility of the manufacturer.

Object of Declaration: Telehandler fork mounted hydraulically operated sweeper collector. Fabricated from high strength steel and hollow sections. Fitted hydraulic motor, valves, hydraulic hoses and fittings.

The object of the declaration described above is in conformity with the relevant UK Statutory Instruments (and their amendments):

2008 No. 1597 Supply of Machinery (Safety) Regulations 2008

The manufacture applied the procedure for assessment of conformity with internal checks on manufacture. A conformity assessment body was not involved.

Additional Information: Technical documentation for the product is available from the manufacturer.

Authorised Signature: *Chris Leslie*
Chris Leslie | Technical Director of X-Form Engineering

Place of Issue: Church Road, Griston, Norfolk, IP265 6QA, England

Date Issued: 1st June 2026



Declaration of Conformity

EC Machinery Directive 2006/42 EC

Document Ref: XF_CE_RS_2026

Manufacturer: X-Form Engineering Limited
Church Road
Griston
Norfolk
IP25 6QA
England

Product: Telehandler fork mounted hydraulically operated sweeper collector. Fabricated from high strength steel and hollow sections. Fitted hydraulic motor, valves, hydraulic hoses and fittings.

Model(s): RS Sweeper Collector Range

Directive(s): 2006/42/EC Machinery Directive
Transposed Harmonised Standards: BS EN 1553 (2000)

We declare that the product named above complies with the relevant sections of the above referenced directive(s), including all the applicable essential health and safety requirements of the directive.

Signed: *Chris Leslie*

Name: Chris Leslie

Position: Technical Director of X-Form Engineering Limited

Date: 1st June 2026