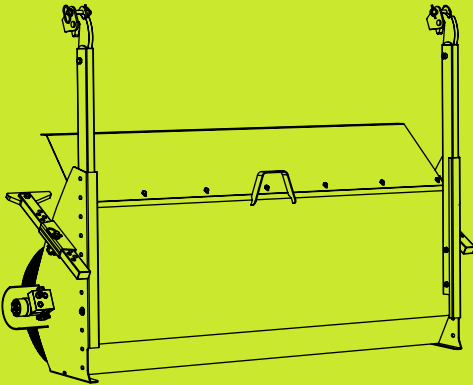


Bucket Sweeper

Manual 2026



Contents

Important Information	3
Product Identification	4
Safety Instructions	5
Installation & Removal	6
Operating Instructions	8
Transporting Loads	9
Maintenance	10
Parts Diagram	11
Parts List	12
Warranty	13
UKCA Declaration of Conformity	14
CE Declaration of Conformity	15

X-Form Engineering Limited

Church Road, Griston, Norfolk, IP25 6QA, England

sales@xformeng.com

Important Information

This manual details the relevant use, safety instructions, and maintenance procedures for the Bucket Sweeper. This document is not a training manual. Operators will need to be trained in the necessary skills to use the attachments before trying to work with it, or they risk being a danger to themselves and the people around them.

Important

Do not attempt to install, operate, or maintain any attachment until you have read and understood all the relevant operator documentation for both the attachment and the carrier machine. Pay strict attention to all relevant safety information. You must observe all relevant laws and regulations.

Intended Use

The Bucket Sweeper is designed to attach to a suitably sized bucket for sweeping, collecting and dumping various materials. This attachment must only be used for this purpose. The Bucket Sweeper is not designed to be used in areas which contain twine or wire. Wrapping of twine or wire around the bearing or motor can shorten its life. Make sure to clear the area of twine / wire before using the Bucket Sweeper.

Carrier Machine Suitability

Always check the load capacity of the carrier machine is sufficient to use with the attachment. Make sure the carrier machine has the correct hitch pick-up / bracket type for the bucket the sweeper is attached to and the auxiliary hydraulic hoses are of a suitable length. To operate this attachment, the carrier machine must be installed with an auxiliary hydraulic circuit.

Servicing

Only routine maintenance, as detailed in this manual, should be carried out by the user. It is recommended that major servicing be carried out by your respective dealer. When servicing, making adjustments, or cleaning, ensure that the appropriate personal protective equipment is worn. Always switch off the carrier machine and remove the key before servicing.

Product Identification

The Bucket Sweeper has an identification plate located on front of the attachment. Use the 'Part Number' when identifying replacement parts.

		X-Form Engineering Griston IP25 6QA UK info@xformeng.com			
Part Number		Weight			
Model		Max Flow Max Pressure			
Pick-up Type		Rated Capacity			
Serial Number		Year of Manufacture			

IMPORTANT Visit www.xformeng.com and read manual before use XF-IDHSv1

ID Plate Item	Description
Part Number	Attachment part number
Model	Attachment model
Pick-up Type	Pick-up/bracket hitch type
Serial Number	Unique serial number
Weight	Attachment weight, without tines, shown in kilograms
Max Flow	Maximum hydraulic flow rate shown in litres per minute
Max Pressure	Maximum hydraulic pressure shown in bar
Rated Capacity	Rated capacity shown in cubic meters
Year of Manufacture	Year the attachment was manufactured

Safety Instructions



Warning

To operate the machine with the attachment safely, you must have the appropriate training and be authorised to use them. It is essential that operators observe all safety instructions as incorrect use can endanger life. You must abide by all relevant laws, including health and safety regulations that apply to the country you are operating in.

General Safety

In this manual, and on the attachment and machine, you will find warning messages. Read and understand them. They tell you of potential hazards and how to avoid them.

- Do not work with the attachment and machine until you are sure that you can control it and are sure that you and others around you will be safe.
- If you are unsure of anything about the attachments, machine, or the job, ask someone who knows. Do not assume anything.

Safety Labels

- Safety labels on the attachment and machine warn you of possible hazards. You can be injured if you do not obey the safety instructions shown.
- If you require eyeglasses for reading, make sure they are worn when reading safety labels. Do not over-stretch or place yourself in a dangerous position to read the safety labels.
- Keep all safety labels clean and readable. Replace lost or damaged safety labels.

Risk Assessment

- It is essential that a risk assessment of the work to be performed is completed and that the operator complies with all safety precautions that the assessment identifies. Do not put your life or others at risk.
- **DANGER!** It is the responsibility of the operator to assess factors affecting machine stability, including size and type load, angle of elevation, the distance the boom is extended, ground condition (remember that wet ground will not support the same loads as when dry), wind speed and direction before operating the machine.
- If you are unsure of the suitability of the attachment or machine for a specific task, contact your attachment/machine manufacturer or distributor, who will be able to advise you.

Installation & Removal

Warning

Keep other people clear of the area while you engage the attachment. If a second person is to be involved in this procedure, ensure that they keep clear of the machine and attachment until signalled by the operator to proceed.

Important

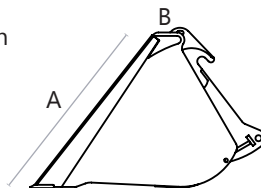
Before installation of the attachment, make sure it is within the carrier machines lifting capability, including the bucket (refer to carrier machine Operator Manual). The machine loading limits at different boom positions will be shown on the load charts located in the cab of the machine and/or in the carrier machine Operator Manual.

Bucket Suitability

The bucket sweeper is designed to suit buckets with measurement 'A' of between 710mm to 1600mm.

The bucket must have straight sides and a flat area to weld the mounting brackets 'B'.

Suitable for our BK 10 to 25 range of buckets.



Welding Mounting Brackets

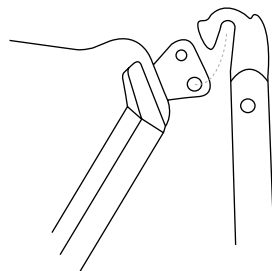
Where the bucket sweeper mounting brackets (part number 4 on the Parts Diagram) are not installed, they will need welding to the top of the bucket 'B' at the appropriate width to suit the attachment. To prevent injury to yourself or others, welding should only be carried out according to EN 287 or AWS standards by an authorised welder.

- Do not weld with the attachment installed on the machine.
- Remove flammable material from the area around the attachment being welded.
- Provide screening to prevent radiation harming others.
- Ensure that the appropriate personal protective equipment (PPE) is worn.
- Always connect the earth clamp to the component being welded.
- Ensure the mounting bracket is facing the right direction, is level, and that they are set at the right width.
- Do not stop and start welds at high stress areas. Avoid stress raising features, such as sudden changes of direction, welds with poor penetration and undercuts.
- Ensure the weld is sufficiently strong to hold the attachment in place when in use.
- Allow the mounting brackets to cool before use.
- Optional - Paint the mounting brackets.

Installation & Removal

Mounting the Bucket Sweeper to Bucket

- Ensure the sweeper is standing upright.
- Remove the locking pins from the mounting brackets.
- Install the shovel to the machine (refer to machines Operator Manual).
- Carefully move the bucket near the bucket sweeper.
- Crowd and lift the bucket until both the mounting brackets engage with mounting hooks (as shown).
- Lift and crowd the bucket a little. Do not lift the bucket sweeper high from the ground.
- Turn the machine off and remove the key.
- At a safe distance, check both mounting hooks are securely located in the mounting brackets.
- Install the locking pins into the mounting brackets.
- Release the hydraulic pressure from the system prior to coupling/decoupling the hydraulic hoses (refer to the carrier machines Operator Manual procedure for connecting and disconnecting to the machines auxiliary hydraulic system). Make sure that the hydraulic hoses are coupled correctly.

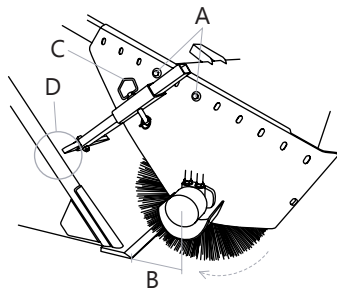


Removal of the Attachment

- Removal is the opposite to installation. Ensure the sweeper is standing upright.

Setting Up the Bucket Sweeper

- Place the bucket on firm level ground, turn the machine off and remove the key.
- Remove bolts marked 'A' on the diagram from both mounting arms and set measurement marked 'B' to approx. 300 to 400mm. Replace and tighten the bolts.
- Make sure the bristles are not crowded over, as shown in the diagram. Remove the locking pins marked 'C' and slide the height adjustment box so that it is approx. 50mm away from the side of the bucket, marked 'D'. Replace the locking pins into the closest hole, making sure that both sides are the same distance away from the bucket sides.



Operating Instructions



Warning

Make sure that you have had adequate training and that you are confident in your ability to operate the attachment safely before you operate it.

Important Safety Instructions

- Before using the attachment, ensure regular maintenance has been carried out and it is in good working order.
- Ensure the area is clear of personnel and other equipment before and during the operation of the attachment. If anyone enters the operating area, stop work and turn off the carrier machine.
- Ensure the attachment does not restrict forward vision or important sight-lines.
- Avoid electric power cables. You could be electrocuted or badly burned if you get the machine or its attachments too close to electrical power cables.
- When leaving the carrier machine, lower the attachment to the ground and turn off the engine.
- Make sure the attachments and any collected material do not exceed the rated lifting capacity of the carrier machine.

Operation of the Attachment

CAUTION! When sweeping do not exceed 5 mph or use high engine revs, as this will damage the sweeper and hydraulic motor. Avoid potholes, raised drain covers and sweeping over bands, twine, wire, ropes, or similar material.

For maximum efficiency and longest brush life, check the main brush height before each operation. Operate the sweeper only on flat level surfaces. Do not allow the bucket to scrape along the ground whilst sweeping.

- Raise the bucket so that the bristles are off the ground. Using the control for the auxiliary services test the operational direction. Only sweep towards the bucket.
- With the bristles rotating slowly, lower the bucket until you can hear them touch the ground. The bucket should be 50 to 75mm off the ground. To prevent premature wear, ensure the bristles are not crowded over.
- Emptying the bucket can be done with the sweeper attached. After emptying, carefully tip the bucket back so the height adjustment box is not damaged.

NOTE Whilst this sweeper has been designed to sweep going forward a small amount of debris will flick underneath the bucket. For best results, sweep whilst reversing.

Transporting Loads



Warning

The safe transit of the load is the responsibility of the machine operator and transport contractor. Any load that may move during transit must be adequately secured.

Transporting Loads with the Attachment

Before transporting the attachment, make sure you obey the local rules and laws where the load will be carried through.

- Slowly raise the load to the minimum height required to safely cross the terrain, ensuring the load weight is within the capacity of the carrier machine.
- Operate the machine whilst ensuring the load always remain level.
- Accelerate, turn and brake gradually.
- Avoid any obstacles, bumps or holes on your intended path.
- Frequently check load to ensure the load has not become unstable.

Preparing the Attachment for Travel

It is your responsibility to comply with all the relevant local laws and regulations before taking the machine and attachment on the road or on site.

Maintenance

Warning

The hydraulic system is under high pressure. Hydraulic oil forced out under pressure can break the skin and cause severe injury. Before working on the hydraulics, release the pressure from the system and turn the machine engine off.

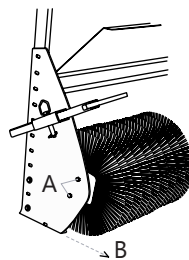
Daily Checks

- Check attachment hydraulic hoses for faults. Some examples of faults include but are not limited to; end fitting damaged or leaking, outer covering chafed or cut and wire reinforcing exposed. Replace if necessary with high pressure hoses (ensure you have a competent knowledge and training of hydraulic maintenance before attempting to change or repair a hose).
- Check the hydraulic fittings/hoses for tightness.
- Check all bolts and pins for damage, breaks or wear. Replace if necessary.
- Check bristles for excessive wear and replace if necessary.
- Keep all safety labels clean and legible. Replace if damaged or worn.

Replacing Bristles

Remove the bolts marked 'A' and swing the bristle cartridge out 'B'. Remove the bearing and collar. Slide off the bristle retaining plate, bristle segments and spacers.

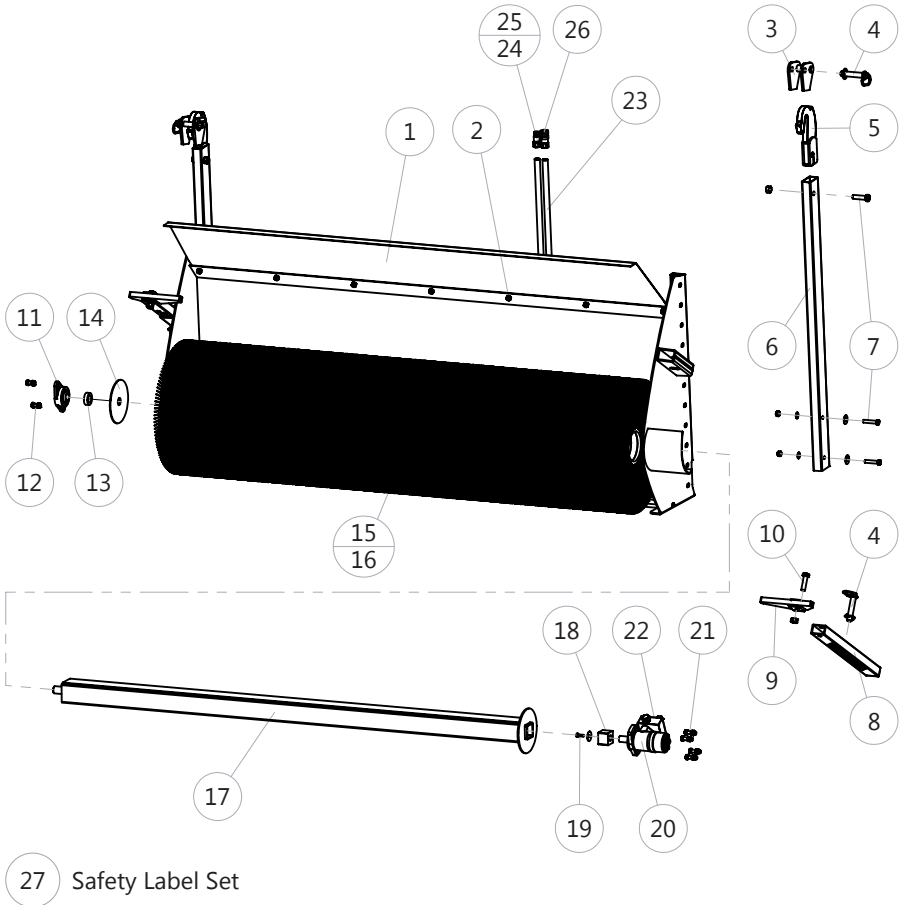
Starting with a bristle, reload the bristle cartridge, alternating bristle segments and plastic spacers, ensuring they are tightly packed. Replace the bristle retaining plate, collar and bearing. Locate the bristle cartridge onto the hydraulic motor block and swing back into place. Finally, replace the bolts marked 'A'.



Storage

- Clean thoroughly, removing all mud and dirt.
- Inspect for visible signs of wear, breakage, or damage.
- Order any parts required and make the necessary repairs to avoid further wear or damage.
- Tighten loose nuts and hydraulic connections.
- Cap hydraulic couplers to protect against contaminants.
- Check bristles for excessive wear and replace if necessary.
- Stand upright and store in a dry and protected place.

Parts Diagram



Model Shown BS-76

BS Parts List

Item	Part No.	Description
1	BS_DD_??*	BS Debris Deflector
2	BS_DDB	BS Debris Deflector Nut & Bolt
3	BS_MB	BS Mounting Bracket
4	BS_LP	BS Locking Pin
5	BS_MH	BS Mounting Hook
6	BS_MA	BS Mounting Arm
7	BS_MABS	BS Mounting Arm Bolt Set
8	BS_HAB	BS Height Adjustment Box
9	BS_HAF	BS Height Adjustment Foot
10	BS_HAFB	BS Height Adjustment Foot Nut & Bolt
11	BS_B	BS Bearing
12	BS_BBS	BS Bearing Nut & Bolt Set
13	BS_C	BS Collar
14	BS_BRP	BS Bristle Retaining Plate
15	BS_BR BS_RBS_??*	BS Bristle Segment (Single) BS Replacement Bristle Set (Includes Parts 12 & 14)
16	BS_PS	BS Plastic Spacer
17	BS_BC_??*	BS Bristle Cartridge
18	BS_HMDB	BS Hydraulic Motor Drive Block
19	BS_HMDBS	BS Hydraulic Motor Drive Block Bolt Set
20	BS_HM	BS Hydraulic Motor (Includes Parts 18, 19 & 23)
21	BS_HMBS	BS Hydraulic Motor Nut & Bolt Set
22	BS_HMVB	BS Hydraulic Motor Valve Block
23	BS_HHAS	BS Hydraulic Hose Auxiliary Service
24	QRBS	Quick Release Bonded Seal
25	QRM	Quick Release Male
26	QRF	Quick Release Female
27	BS_SLS	BS Safety Label Set

*Replace '??' with the 2 numbers in the Part Number (see Product Identification).

Warranty

Our products are warranted for a period of 12 months from the date of delivery. The warranty does not apply to wear parts. Any work carried out on our products while under warranty must be done with written agreement from X-Form Engineering. At our discretion, we may require that the product be returned to us for rectification work and apply transport charges.

X-Form Engineering shall not be liable in any circumstances for any loss, injury, or expense, whether direct or indirect, which may arise for any reason whatsoever in connection with any goods supplied or work done.

X-Form Engineering Limited

Church Road, Griston, Norfolk, IP25 6QA, England

sales@xformeng.com



Declaration of Conformity

In accordance with UK Government guidance

Document Ref: XF_UKCA_BS_2026

Product: Bucket Sweeper

Model(s): BS Range

Manufacturer: X-Form Engineering Limited
Church Road, Griston, Norfolk, IP25 6QA, England

This declaration is issued under the sole responsibility of the manufacturer.

Object of Declaration: Bucket mounted hydraulically operated sweeper.
Fabricated from high strength steel and hollow sections.
Fitted hydraulic motor, valves, hydraulic hoses and fittings.

The object of the declaration described above is in conformity with the relevant UK Statutory Instruments (and their amendments):

2008 No. 1597 Supply of Machinery (Safety) Regulations 2008

The manufacture applied the procedure for assessment of conformity with internal checks on manufacture. A conformity assessment body was not involved.

Additional Information: Technical documentation for the product is available from the manufacturer.

Authorised Signature: *Chris Leslie*
Chris Leslie | Technical Director of X-Form Engineering

Place of Issue: Church Road, Griston, Norfolk, IP265 6QA, England

Date Issued: 1st June 2026



Declaration of Conformity

EC Machinery Directive 2006/42 EC

Document Ref: XF_CE_BS_2026

Manufacturer: X-Form Engineering Limited
Church Road
Griston
Norfolk
IP25 6QA
England

Product: Bucket mounted hydraulically operated sweeper. Fabricated from high strength steel and hollow sections. Fitted hydraulic motor, valves, hydraulic hoses and fittings.

Model(s): BS Bucket Sweeper Range

Directive(s): 2006/42/EC Machinery Directive
Transposed Harmonised Standards: BS EN 1553 (2000)

We declare that the product named above complies with the relevant sections of the above referenced directive(s), including all the applicable essential health and safety requirements of the directive.

Signed: *Chris Leslie*

Name: Chris Leslie

Position: Technical Director of X-Form Engineering Limited

Date: 1st June 2026