



2016



About Us

In 1996 four brothers launched Eastern Attachments with a single goal in mind - To produce class leading agricultural and construction attachments. Form and function were to be equally addressed, build quality was not to be compromised and our products had to offer the best value for money.

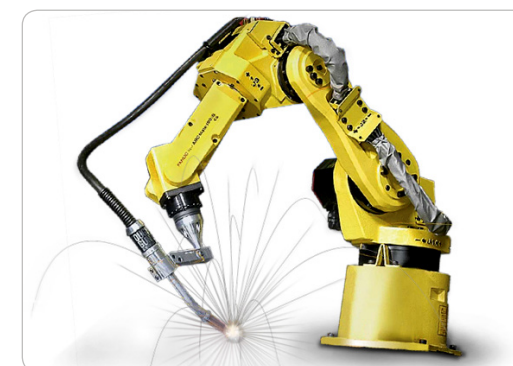
We soon discovered that if these high standards were to be achieved we would need to develop new production techniques, use advanced materials and have innovation central to the whole process from design to production.

Whilst it's been hard work, the result is a company which has grown to become one of the UK's largest attachment manufacturers, boasting a purpose built production facility which utilises some of the worlds most advanced technologies. However, our greatest satisfaction comes from producing attachments in which we can take pride.

Eastern Attachments Limited
Maurice Gaymer Road
Attleborough
Norfolk
NR17 2QZ
United Kingdom

Tel: +44 (0) 1953 450350
Fax: +44 (0) 1953 450351

Web: www.easternattachments.co.uk
Email: sales@easternattachments.co.uk



FABRICATION SERVICES

In addition to manufacturing class leading products we offer a highly skilled fabrication service. From a single specialist item to fully automated production runs our experience allows us to provide assistance with design work and technically challenging problems. Additionally, we can help reduce costs and improve specifications by utilising high-strength steels and advanced production techniques.

Contents

Page 4 Auto Locking Skip



Page 5 Tipping Skip



Page 6 Bucket Sweeper



Page 7 Sweeper Collector



Page 8 X-Form Professional



Page 10 Buckets



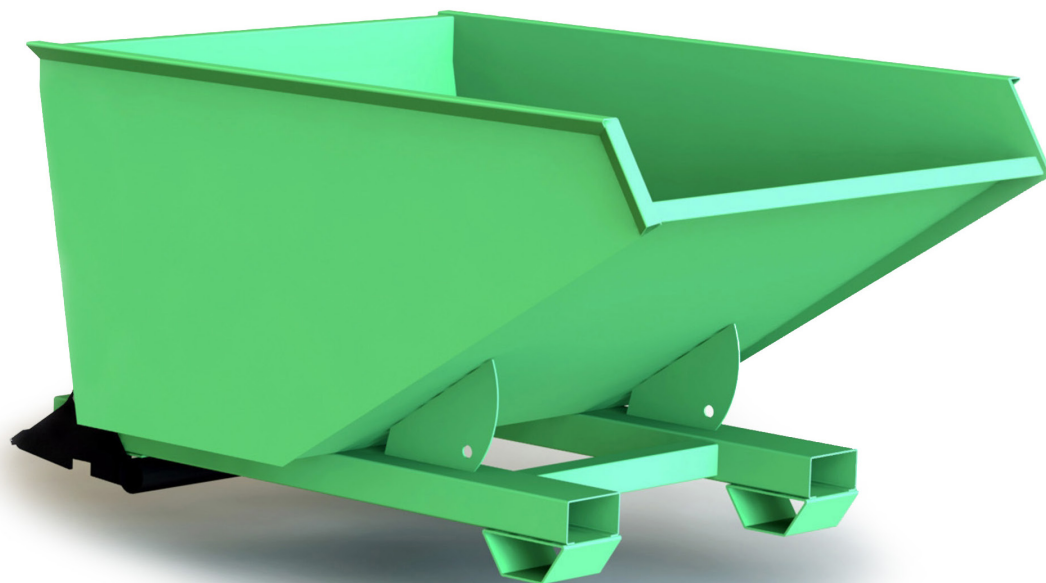
Page 11 Grabs



Page 12 Information



Auto Locking Skip



The Auto Locking Skip has been engineered to make the process of lifting, transporting and emptying safer, faster and more efficient by allowing the driver to remain within the cab throughout the entire operation.

The locking mechanism automatically engages behind the heels of both forks when the skip is lifted and will only release when placed back on the ground.

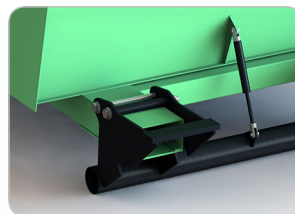
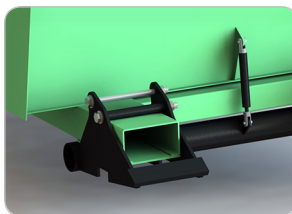
KEY FEATURES

- Safer and Faster Auto Locking Mechanism - Automatically locks onto the heels of the forks
- Manufactured from High Strength Steel
- Unique Integral Box Technology - Significantly increases skip life and resilience to accidental damage
- Fork Pocket Feet - Helps to raise the auto locking skip off soft and uneven surfaces
- Robot Welded
- Finished in Anti-Corrosive Paint - Available in a wide range of colours
- Clear Operator Instructions - On every auto locking skip
- Designed and Manufactured in the UK
- CE Certified

TECHNICAL INFORMATION

- Approx. Level Fill Capacity 1.20m³ (1200 ltrs)
- Max. Load 2000kg

| Product | Capacity | Width | Depth | Height | Weight | Lock Release/ Frame Entry |
|---------|--|-----------------|-----------------|-----------------|--------|--|
| ALS120 | 1.20m ³ (42ft ³) | 1.35m (4'5") | 1.85m (6'1") | 1.00m (3'3") | 220kg | Auto Locking Mechanism 2 Way Entry |



Tipping Skip



FEATURES

- Manufactured from High Strength Steel
- Robot Welded & Sprayed
- Operator Instructions - Clear instructions are placed above the release handle.
- Release Handle - Positioned as low as possible, on the same side as the telehandler cab, and with sufficient room between the hopper and the forklift carriage to aid safe use.
- Safety Ring - Locks the handle and prevents it from being released accidentally.
- Release Handle Lock - The safety ring can be padlocked into place.
- Self Locking Return - The geometry of the hopper allows it to roll forward when full and automatically lock back into place once emptied.
- Enclosed Spring - Incorporated into the hook assembly to protect it from damage.
- Secure Pocketed Frame - Reduces movement during transportation and emptying.
- Frame Feet - Helps raise the tipping skip off soft and uneven surfaces.
- Unique Integral Box Technology - Offers increased resilience to accidental damage.
- Optional Secure Cable - Prevents the tipping skip sliding off the fork tines.
- Optional Release Extension Arm - Aids the safe operation of the release handle.

TECHNICAL INFORMATION

- Capacity of 1.20m³ (1200 ltrs)
- Max. Load 2000kg

Optional Extras:
Castor Set (x2 Fixed & x2 Swivel - Total Max. Load 1000kg)

| Product | Capacity | Width | Depth | Height | Weight | Lock Release/ Frame Entry |
|---------|--|-----------------|-----------------|-----------------|--------|--|
| TS120 | 1.20m ³ (42ft ³) | 1.35m (4'5") | 1.75m (5'9") | 1.15m (3'9") | 225kg | Manual Release & Safety Lock 4 Way Entry |

Bucket Sweeper



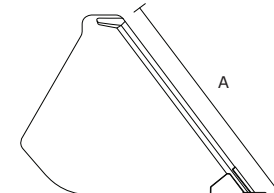
FEATURES

- Galvanised Body
- Manufactured from High Strength Steel
- Stands Upright When Not in Use
- Minimal Maintenance
- Quick Release Bristle Cartridge

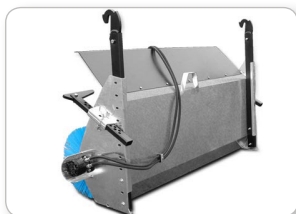
TECHNICAL INFORMATION

- 22 x 5" Double Bonded Polypropylene Bristles
- Hydraulic Flow Range 20 - 100 ltrs
- Max. Hydraulic Pressure 250 bar

Bucket Suitability



Suit Buckets with measurement 'A' of between 710mm (28") to 1600mm (63")
(From the front of the wear edge to the top edge of the bucket, as shown)



| Product | To Fit Bucket Widths | Sweeping Width | Overall Width | Weight |
|---------|------------------------|----------------|---------------|--------|
| BS180 | 1.83 (6') to 2.13 (7') | 1.83m (6') | 2.11m (6'11") | 205kg |
| BS220 | 2.13 (7') to 2.44 (8') | 2.13m (7') | 2.42m (7'11") | 220kg |
| BS240 | 2.44 (8') to 2.75 (9') | 2.44m (8') | 2.72m (8'11") | 235kg |

Sweeper Collector



FEATURES

- Compact Design offers Exceptional Control, Visibility & Strength
- Manufactured from High Strength Steel
- Fully Floating Tine Pockets with Unique Quick Lock
- Large Heavy Duty Castors
- Gravity Feed Dust Suppression Water System
- Enclosed Hydraulics with Easy Access for Maintenance
- Auto Operation of Broom & Collector on Single Set of Hydraulic Services
- Quick Release Bristle Cartridge

TECHNICAL INFORMATION

- 22 x 5" Double Bonded Polypropylene Bristles
- Collector Volume 400 Itrs
- Water Tank 200 Itrs
- Hydraulic Flow Range 20 - 100 Itrs
- Max. Hydraulic Pressure 250 bar

| Product | Width | Depth | Height | Weight | Sweeping Width |
|---------|-----------------|-----------------|-----------------|--------|----------------|
| RS220 | 2.40m (6'7") | 2.00m (6'7") | 1.05m (3'6") | 695kg | 2.20m (7'3") |

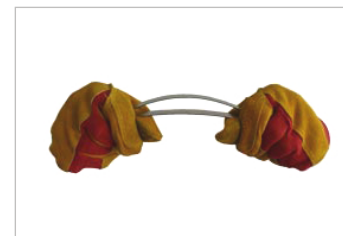
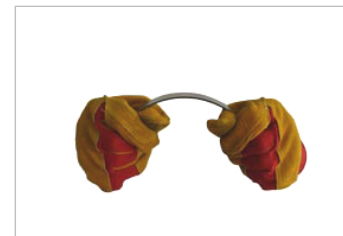
Our X-Form Professional range of loader attachments takes its name from the use of high-strength low-alloy steels, often referred to as 'ten form' (hence the X - roman numerals).

This advanced steel has a far greater yield strength and resistance to deformation than would normally be experienced with standard mild steels commonly used within industry.

Together with our unique engineering technologies this steel has allowed us to deliver the superior strength of a professional range, whilst offering the best value for money.

Stronger, Lighter, More Efficient

All Steels Are Not Equal



Deformation Test

X-Form Steel 'vs' Standard Mild Steel

Buckets 6' to 7' 6"



- X-Form Steel (High-Strength Low-Alloy)
- Heat Treated Boron HB500 Wear Edge & Corner Pads
- Unique Integral Box Technology
- Coastal Grade 2 Pack Polyurethane Paint

- Widths of 1.85m (6') to 2.30m (7'6")
- Capacity of 0.80m³ (28ft³) to 2.81m³ (99ft³)

Optional Extras:

Flush Mounted Bolt On Wear Edge, Extra Welded Wear Edge

| Product | Capacity | Width | Depth | Height | Weight | Wear Edge |
|---------|--|-----------------|-----------------|-----------------|--------|-------------------|
| BK10-60 | 0.80m ³ (28ft ³) | 6' (1.85m) | 1.11m (3'8") | 0.83m (2'9") | 345kg | 20 x 150 x 1850mm |
| BK15-60 | 1.20m ³ (43ft ³) | | 1.33m (4'4") | 0.99m (3'3") | 410kg | 20 x 150 x 1850mm |
| BK10-66 | 0.87m ³ (31ft ³) | 6'6" (2.00m) | 1.11m (3'8") | 0.83m (2'9") | 362kg | 20 x 150 x 2000mm |
| BK15-66 | 1.30m ³ (46ft ³) | | 1.33m (4'4") | 0.99m (3'3") | 429kg | 20 x 150 x 2000mm |
| BK10-70 | 0.93m ³ (33ft ³) | 7' (2.15m) | 1.11m (3'8") | 0.83m (2'9") | 379kg | 20 x 150 x 2150mm |
| BK15-70 | 1.40m ³ (49ft ³) | | 1.33m (4'4") | 0.99m (3'3") | 448kg | 20 x 150 x 2150mm |
| BK17-70 | 1.59m ³ (56ft ³) | | 1.41m (4'8") | 1.06m (3'6") | 477kg | 20 x 150 x 2150mm |
| BK20-70 | 1.87m ³ (66ft ³) | | 1.53m (5'0") | 1.14m (3'9") | 512kg | 20 x 150 x 2150mm |
| BK10-76 | 1.00m ³ (35ft ³) | 7'6" (2.30m) | 1.11m (3'8") | 0.83m (2'9") | 396kg | 20 x 150 x 2300mm |
| BK15-76 | 1.50m ³ (53ft ³) | | 1.33m (4'4") | 0.99m (3'3") | 467kg | 20 x 150 x 2300mm |
| BK17-76 | 1.70m ³ (60ft ³) | | 1.41m (4'8") | 1.06m (3'6") | 497kg | 20 x 150 x 2300mm |
| BK20-76 | 2.00m ³ (71ft ³) | | 1.53m (5'0") | 1.14m (3'9") | 534kg | 20 x 150 x 2300mm |
| BK25-76 | 2.34m ³ (83ft ³) | | 1.66m (5'5") | 1.23m (4'0") | 607kg | 20 x 200 x 2300mm |
| BK27-76 | 2.53m ³ (89ft ³) | | 1.72m (5'8") | 1.28m (4'2") | 662kg | 20 x 200 x 2300mm |
| BK30-76 | 2.81m ³ (99ft ³) | | 1.82m (6'0") | 1.35m (4'5") | 736kg | 20 x 200 x 2300mm |

Buckets 8' to 9'



- X-Form Steel (High-Strength Low-Alloy)
- Heat Treated Boron HB500 Wear Edge & Corner Pads
- Unique Integral Box Technology
- Coastal Grade 2 Pack Polyurethane Paint

- Widths of 2.45m (8') to 2.75m (9')
- Capacity of 1.07m³ (38ft³) to 5.00m³ (177ft³)

Optional Extras:

Flush Mounted Bolt On Wear Edge, Extra Welded Wear Edge

| Product | Capacity | Width | Depth | Height | Weight | Wear Edge |
|---------|---|-----------------|------------------|-----------------|--------|-------------------|
| BK10-80 | 1.07m ³ (38ft ³) | 8' (2.45m) | 1.11m (3'8") | 0.83m (2'9") | 413kg | 20 x 150 x 2450mm |
| BK15-80 | 1.60m ³ (57ft ³) | | 1.33m (4'4") | 0.99m (3'3") | 486kg | 20 x 150 x 2450mm |
| BK17-80 | 1.81m ³ (64ft ³) | | 1.41m (4'8") | 1.06m (3'6") | 517kg | 20 x 150 x 2450mm |
| BK20-80 | 2.13m ³ (75ft ³) | | 1.53m (5'0") | 1.14m (3'9") | 556kg | 20 x 150 x 2450mm |
| BK25-80 | 2.50m ³ (88ft ³) | | 1.66m (5'5") | 1.23m (4'0") | 631kg | 20 x 200 x 2450mm |
| BK27-80 | 2.70m ³ (95ft ³) | | 1.72m (5'8") | 1.28m (4'2") | 687kg | 20 x 200 x 2450mm |
| BK30-80 | 3.00m ³ (106ft ³) | | 1.82m (6'0") | 1.35m (4'5") | 736kg | 20 x 200 x 2450mm |
| BK40-80 | 3.56m ³ (126ft ³) | | 1.85m (6'1") | 1.43m (4'8") | 814kg | 20 x 200 x 2450mm |
| BK50-80 | 4.44m ³ (157ft ³) | | 1.95m (6'11") | 1.54m (5'1") | 886kg | 20 x 200 x 2450mm |
| BK25-86 | 2.66m ³ (94ft ³) | 8'6" (2.60m) | 1.66m (5'5") | 1.23m (4'0") | 655kg | 20 x 200 x 2600mm |
| BK27-86 | 2.87m ³ (101ft ³) | | 1.72m (5'8") | 1.28m (4'2") | 712kg | 20 x 200 x 2600mm |
| BK30-86 | 3.19m ³ (113ft ³) | | 1.82m (6'0") | 1.35m (4'5") | 763kg | 20 x 200 x 2600mm |
| BK40-86 | 3.78m ³ (133ft ³) | | 1.85m (6'1") | 1.43m (4'8") | 842kg | 20 x 200 x 2600mm |
| BK50-86 | 4.72m ³ (167ft ³) | | 1.95m (6'11") | 1.54m (5'1") | 916kg | 20 x 200 x 2600mm |
| BK40-90 | 4.00m ³ (141ft ³) | 9' (2.75m) | 1.85m (6'1") | 1.43m (4'8") | 870kg | 20 x 200 x 2750mm |
| BK50-90 | 5.00m ³ (177ft ³) | | 1.95m (6'11") | 1.54m (5'1") | 940kg | 20 x 200 x 2750mm |

Grabs



- X-Form Steel (High-Strength Low-Alloy)
- Enclosed Back Keeps Carriage & Hydraulics Clean
- Unique Double Box Technology
- Coastal Grade 2 Pack Polyurethane Paint
- Widths of 1.70m (5'6") to 2.75m (9')
- Capacity of 0.90m³ (32ft³) to 2.70m³ (95ft³)
- Tine Lengths of 820mm (2'8") or 1100mm (3'7")
- Tines - Conus 1 & Conus 2 (Heat Treated & Hardened)
- Max. Hydraulic Pressure 250 bar

Options:

Hardox Tines, Extra Straight & Curved Tines, PO Check Valve

| Product | Capacity | Width | Depth | Height | Weight | Tines |
|---------|--|-----------------|-----------------|-----------------|--------|------------------------------------|
| GL-56 | 0.90m ³ (32ft ³) | 5'6" (1.70m) | 0.82m (2'8") | 0.82m (2'8") | 261kg | 8 x 820mm Fork 5 x 680mm Grab |
| GL-60 | 0.95m ³ (32ft ³) | 6' (1.85m) | 0.82m (2'8") | 0.82m (2'8") | 274kg | 9 x 820mm Fork 5 x 680mm Grab |
| GL-66 | 1.00m ³ (35ft ³) | 6'6" (2.00m) | 0.82m (2'8") | 0.82m (2'8") | 283kg | 9 x 820mm Fork 5 x 680mm Grab |
| GS-66 | 1.50m ³ (53ft ³) | | 1.10m (3'7") | 1.15m (3'9") | 457kg | 8 x 980mm Fork 5 x 820mm Grab |
| GS-70 | 1.60m ³ (57ft ³) | 7' (2.15m) | 1.10m (3'7") | 1.15m (3'9") | 470kg | 8 x 980mm Fork 5 x 820mm Grab |
| GS-76 | 1.70m ³ (60ft ³) | 7'6" (2.30m) | 1.10m (3'7") | 1.15m (3'9") | 490kg | 9 x 980mm Fork 5 x 820mm Grab |
| GH-76 | 2.25m ³ (79ft ³) | | 1.30m (4'3") | 1.27m (4'2") | 541kg | 9 x 1100mm Fork 5 x 980mm Grab |
| GS-80 | 1.80m ³ (64ft ³) | 8' (2.45m) | 1.10m (3'7") | 1.15m (3'9") | 510kg | 10 x 980mm Fork 5 x 820mm Grab |
| GH-80 | 2.40m ³ (85ft ³) | | 1.30m (4'3") | 1.27m (4'2") | 563kg | 10 x 1100mm Fork 5 x 980mm Grab |
| GS-86 | 1.90m ³ (67ft ³) | 8'6" (2.60m) | 1.10m (3'7") | 1.15m (3'9") | 523kg | 10 x 980mm Fork 5 x 820mm Grab |
| GH-86 | 2.55m ³ (90ft ³) | | 1.30m (4'3") | 1.27m (4'2") | 577kg | 10 x 1100mm Fork 5 x 980mm Grab |
| GH-90 | 2.70m ³ (95ft ³) | 9' (2.75m) | 1.30m (4'3") | 1.27m (4'2") | 599kg | 11 x 1100mm Fork 5 x 980mm Grab |



Information

Terms and Conditions

Quotations and Price

The price quoted excludes VAT (unless otherwise stated). VAT will be charged at the rate applying at the time of delivery and / or performance of the service.
 No quotation by us shall constitute an offer by us and all quotations are subject to withdrawal without notice. Quotations may be given orally and in writing.
 Quotations lapse 30 days after the date of quotations (unless otherwise stated).
 The price quoted excludes delivery, delivery pallets, crates, and other packaging materials unless otherwise stated in writing at the time of your order. There will be no reduction in the price if you collect the goods.
 Unless otherwise stated, the price quoted is an illustrative estimate only. At any time before actual delivery of any part of the goods or performance of the service we may adjust the price to reflect any increase in our costs of supplying the goods and / or other services. We will endeavour to agree any such.
 Other than as imposed by law, rates of tax and duties on the goods and / or services will be those applying at the time of delivery and / or performance.

Delivery

All delivery times quoted are estimates only. Eastern Attachments accepts no liability for any delay in the delivery or any consequential loss.

Title

Until you pay the contract price in full for goods: all goods supplied by us remain our property; you must store them so that they are clearly identifiable as our property and in or on premises to which you are able to grant us access. You must insure them and keep them insured for the full amount due (against the risks for which a prudent owner would insure them) and hold the policy on trust for us; You may use those goods and sell them in the ordinary course of your business and until payment is made in full, and all proceeds of such sale is to be held on trust for us.

Warranties

Our products are warranted for a period of 12 months from the date of purchase. The warranty does not apply to wear parts. Any work carried out on our products while under warranty must be done with agreement from Eastern Attachments. Claims made for work carried out without our authorisation will be rejected. Eastern Attachments may require the product back for warranty work at our own discretion, transport charges will be the responsibility of the customer.

Ordering

If we prepare the goods in accordance with your specifications or instructions, you must ensure that the specifications or instructions are in writing and are accurate. You must ensure that goods prepared in accordance with those specifications or instructions will be fit for the purpose for which you intend to use them. We accept no liability for any claim whatsoever relating to fitness for purpose for goods which have been prepared in accordance with your specifications or instructions other than that they would not have been so prepared.
 Goods are normally sold by the number of items ('quantity') or weight (weighted or calculated). When sold by weight, which includes pallets and any packaging, we are not liable for any quantity variation.

Return of Goods

We will accept the return of goods from you only: by prior arrangement (confirmed in writing by us); on payment of an agreed handling charge (unless the goods were defective when delivered); and in all cases, where the goods are as fit for sale on their return as they were on delivery.

Cancellation

If the order is cancelled (for any reason) you are then to pay us for all stock (finished or unfinished that we may then hold (or to which we are committed for the order)).
 We may suspend or cancel the order, by written notice if: you fail to pay us any money when due (under the order or otherwise); you become insolvent; you fail to honour your obligations under these Conditions.
 You may not cancel the order unless we agree in writing.

A full copy of our terms & conditions are available from our sales office.

Approximate Material Weights

These figures are only a guide and may vary

| Product | kg/m ³ | % Fill |
|----------------------------|-------------------|--------|
| Apples | 525 | 85 |
| Ashes | 604 | 85 |
| Barley | 600 | 85 |
| Beet Pulp (Nuts) | 604 | 100 |
| Beet Pulp (Pressed) | 609 | 110 |
| Brewers Grain | 1110 | 85 |
| Brick Aggregate | 1828 | 100 |
| Carrots | 636 | 100 |
| Cement (Natural) | 874 | 100 |
| Cement (Portland) | 1440 | 100 |
| Chalk | 795 | 100 |
| Clay (Fire) | 2080 | 100 |
| Clay (Wet) | 1680 | 110 |
| Coal (Anthracite) | 1046 | 100 |
| Coal (Bitumous) | 765 | 100 |
| Coke (Loose) | 570 | 85 |
| Earth (Dry) | 1150 | 100 |
| Fertilizer (Mixed) | 1030 | 85 |
| Flour | 445 | 85 |
| Gravel (Dry) | 1650 | 85 |
| Hay (Normal Density Bale) | 190 | 110 |
| Lime (Quick) | 881 | 100 |
| Limestone (Crushed) | 1530 | 100 |
| Manure (Farmyard) | 922 | 85 |
| Nitrate Fertilizer | 1250 | 85 |
| Oats | 415 | 85 |
| Onions | 556 | 85 |
| Peat (Dry) | 400 | 100 |
| Petroleum Coke | 680 | 85 |
| Potatoes | 699 | 85 |
| Refuse (Town) | 318 | 100 |
| Rubble | 1047 | 100 |
| Sand (Dry) | 1550 | 100 |
| Sand (Wet) | 1890 | 110 |
| Sawdust | 238 | 110 |
| Silage (Ensile) | 747 | 110 |
| Silage (Green) | 349 | 110 |
| Slurry | 1780 | 85 |
| Snow (Fresh) | 200 | 110 |
| Snow (Wet) | 400 | 110 |
| Sodium Chloride (Dry Salt) | 1300 | 85 |
| Straw (High Density Bale) | 254 | 110 |
| Sugar Beet | 530 | 100 |
| Turnips | 540 | 100 |
| Wheat | 730 | 85 |

| Conversion Table | |
|------------------|---------------------|
| 1 Cubic Metre | 35.3 Cubic Feet |
| 1 Cubic Metre | 1.31 Cubic Yards |
| 1 Cubic Metre | 1000 litres |
| 1 Litre | 0.03 Cubic Feet |
| 1 Kilogramme | 2.2 Pounds |
| 1 Metric Tonne | 0.984 Tons Imperial |
| 25.4 mm | 1" |
| 4.546 Litres | 1 Gallon |

Eastern Attachments Limited
Maurice Gaymer Road
Attleborough
Norfolk
NR17 2QZ
United Kingdom

Tel: +44 (0) 1953 450350
Fax: +44 (0) 1953 450351

Web: www.easternattachments.co.uk
Email: sales@easternattachments.co.uk

